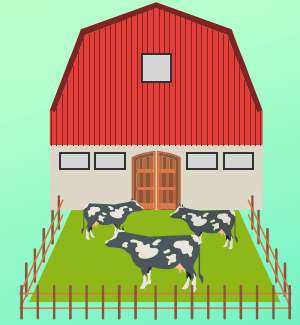
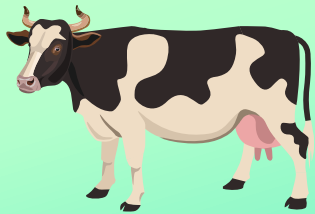


Cattle Breeds



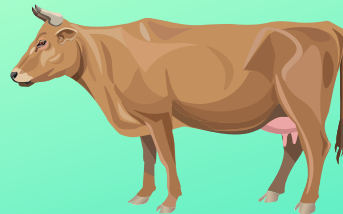
Holstein



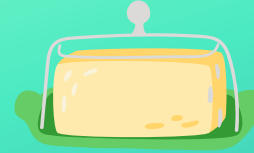
Recognizable by their black and white markings, Holsteins are known as a dairy cow and have the world's highest milk productions.



Jersey



From an island in the British Channel, Jerseys are smaller than Holsteins and produce denser milk that is higher in butterfat.



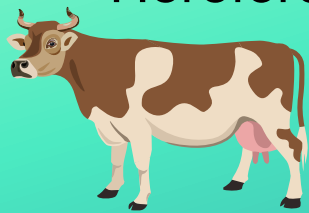
Red Poll



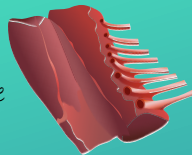
The milk from the Red Poll cow is quite good quality, according to most owners of the breed. They yield an average of 5,000 liters per year, with a butterfat content of 4.2% and protein levels of 3.5%.



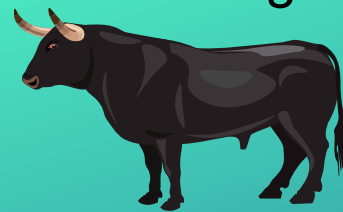
Hereford



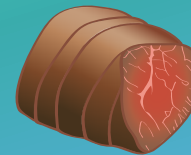
From England, Hereford is an ancient breed. Red in color, they are fast-growing cattle with good beef quality.



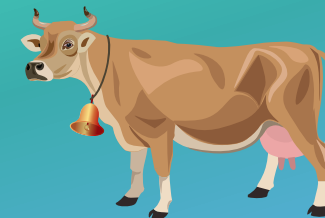
Angus



Known as Aberdeen Angus around the world, the breed arose in Scotland. Solid black or red, Angus is valued for adaptability, health, and marbled meat.



Guernsey



A Guernsey cow is often referred to as the "Royal Breed" because their milk is almost golden.

